

CERTIFICATE OF LOCATION OF GOVERNMENT CORNER

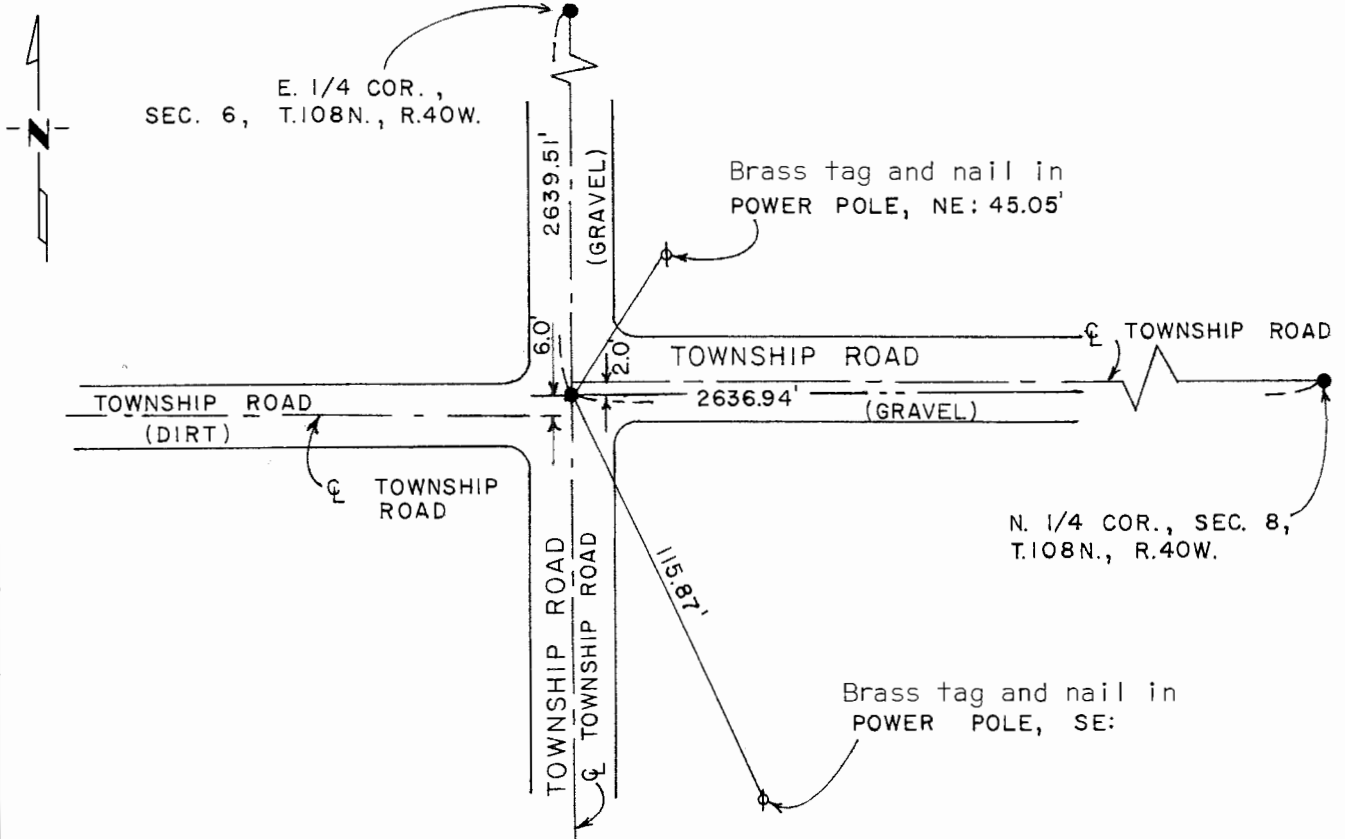
SOUTHEAST Corner of Section 6, Township 108 N., Range 40 W., 5th P.M.

STATE OF MINNESOTA, County of MURRAY

At the corner location shown on the sketch:

- On 9 - 22 - 80 found a stone per County record
DATE
- left monument as found, lowered monument, removed monument (explain)
- On 9 - 22 - 80 placed a 1/2" iron reinforcing bar with "L.S. 12967" cap over
DATE said stone.

SKETCH OF REFERENCE TIES



I hereby certify that this document and the data contained herein was prepared by me or under my direct supervision.

[Signature] SIGNATURE 12/22/81 DATE

Registration No. 12967
 Land Surveyor, Professional Engineer
 County Surveyor, County Engineer

OFFICE OF THE COUNTY RECORDER
 County of MURRAY

I hereby certify that this document was filed in the Co. Recorders office at 10 A .M. on the 18th day of February A.D., 19 82

County Recorder Willard W. Ohme

By _____, Deputy

DOCUMENT NO. _____